

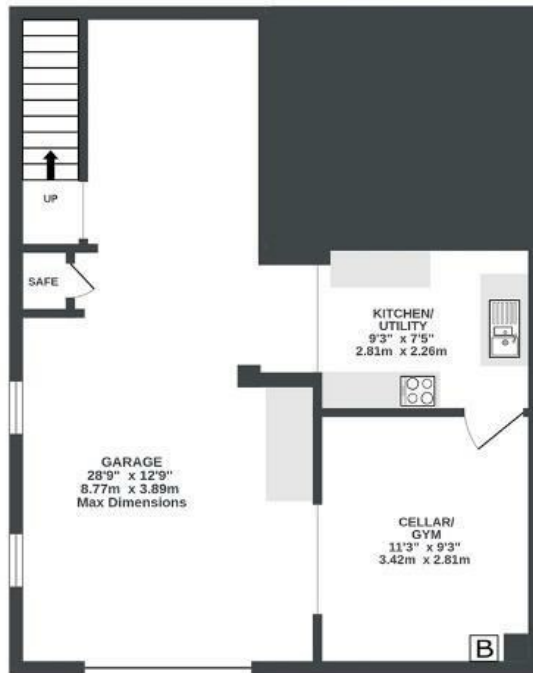
# Cromwell Road

## ST ANDREWS

APPROXIMATE FLOOR AREA  
174.6 SQM / 1880 SQFT



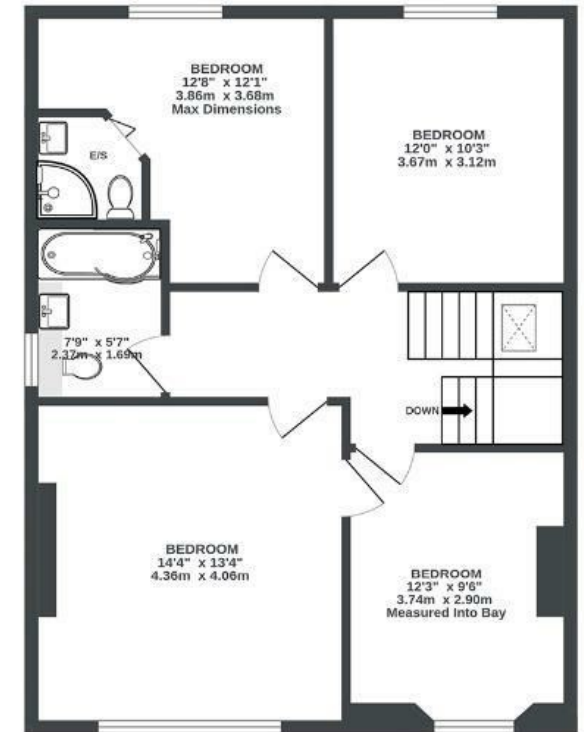
LOWER GROUND FLOOR  
510 sq.ft. (47.3 sq.m.) approx.



UPPER GROUND FLOOR  
667 sq.ft. (61.9 sq.m.) approx.



1ST FLOOR  
703 sq.ft. (65.3 sq.m.) approx.



Illustrations are for reference purposes only, measurements are approximate, not to scale.

**Boardwalk**

# Cromwell Road

ST. ANDREWS, BRISTOL



£925,000



5 Bedrooms



BS6 5HB



2 Bathrooms

*Living so close to Gloucester Road has been amazing, Saturday trips to the bakery or relaxing in one of the many coffee shops have been a real treat. We love the variety of independent shops, and St Andrew's Park is just a short walk away. The open-plan layout has been perfect for hosting, especially with the doors opening straight into the garden. The garden is a generous size for the area and a real sun trap in summer. Watching tadpoles and frogs in the pond has been such a joy for our daughter.*

*The big windows flood the house with light and give lovely views over Redland and Cotham. From the top window, we've enjoyed watching hot air balloons and fireworks."*

